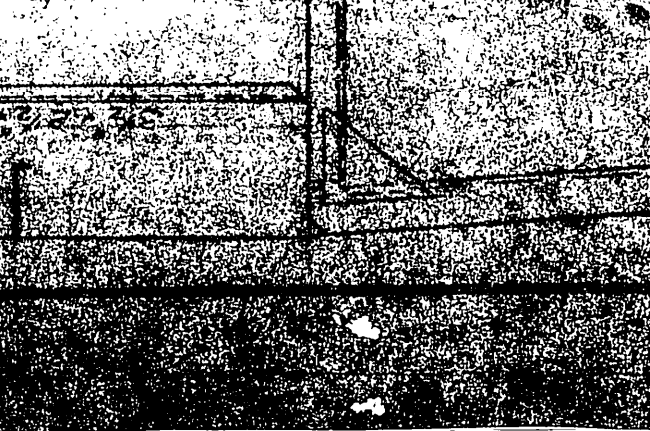
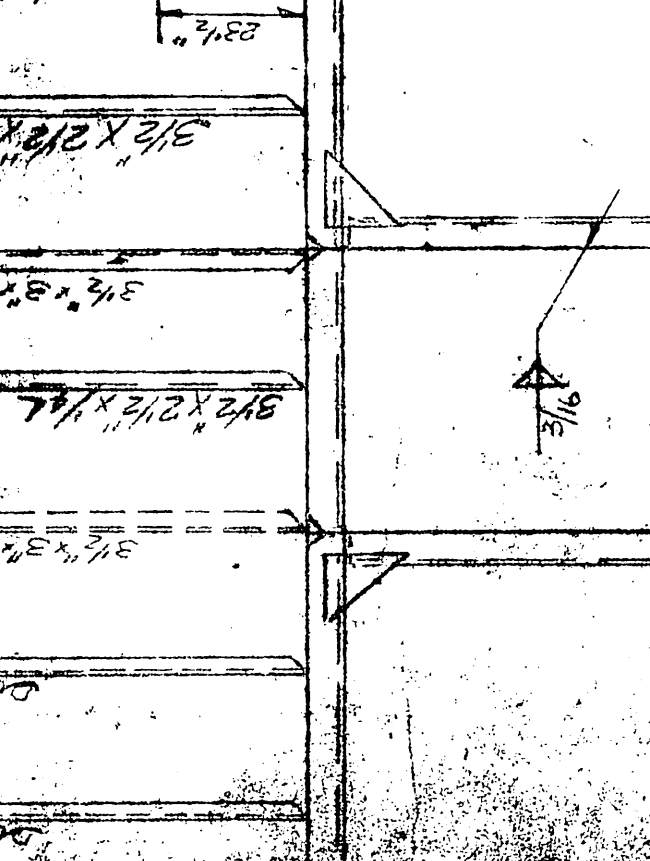
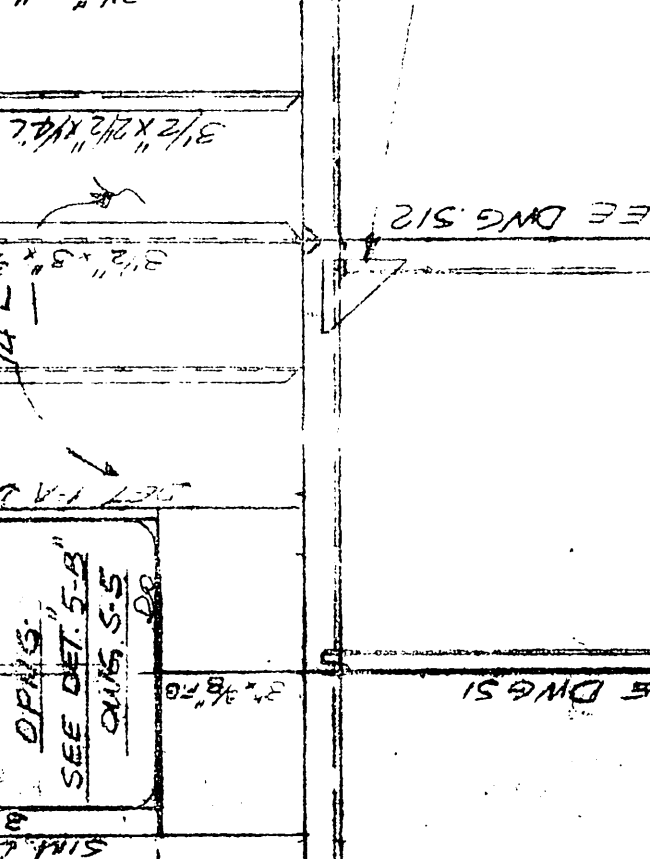
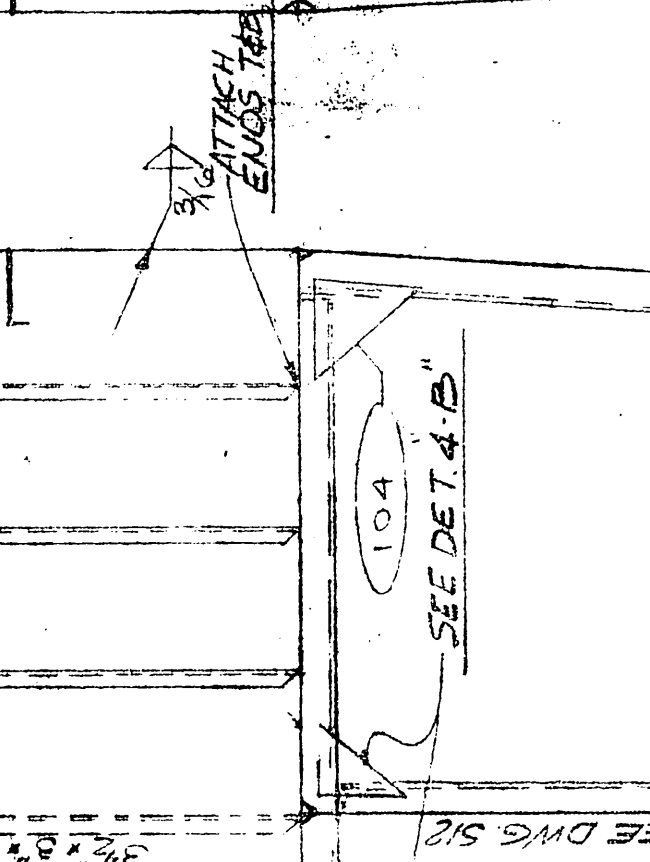
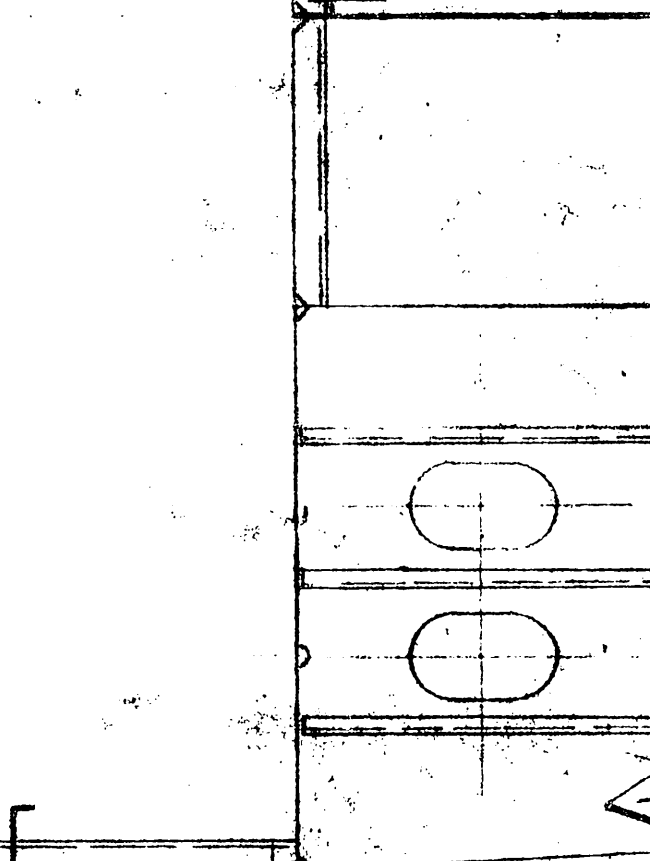
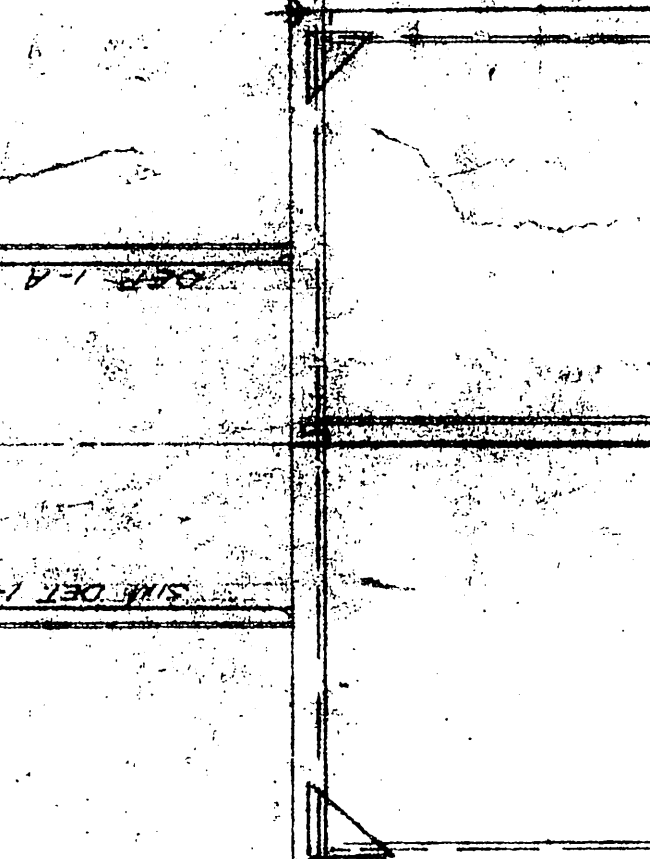
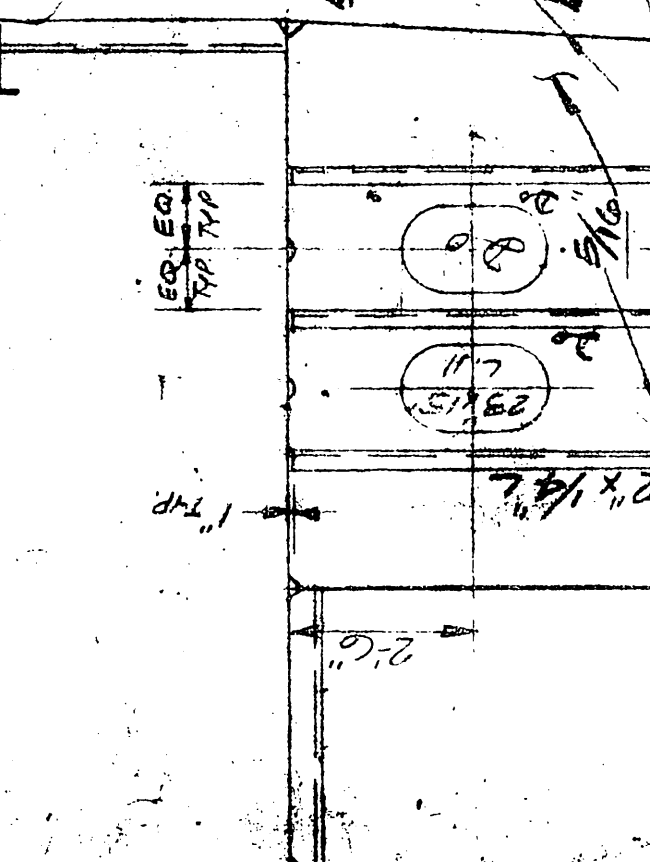
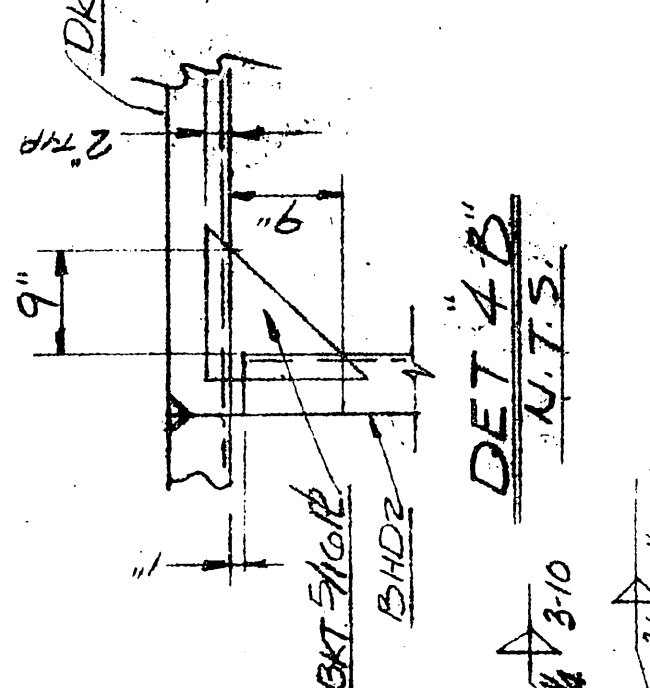


FR # 31  
SIM TO FR # 29 EXCEPT AS NOTED

FR # 30  
SIM TO FR # 29 EXCEPT AS NOTED

FR # 29  
SIM TO FR # 29 EXCEPT AS NOTED

- GENERAL NOTES
1. ALL FRAMES ARE VIEWED LAG AFT.
  2. ALL SNIPES ARE 2X2 UNLESS OTHERWISE NOTED.



NO.	DATE	DESCRIPTION	BY	CHKD
1	9-18-72	ISSUED FOR CONSTRUCTION		
2		ADDED 1/2\"/>		

NO.	DATE	DESCRIPTION	BY	CHKD
3		ADDED 1/2\"/>		

NO.	DATE	DESCRIPTION	BY	CHKD
4		ADDED 1/2\"/>		

NO.	DATE	DESCRIPTION	BY	CHKD
5		ADDED 1/2\"/>		

NO.	DATE	DESCRIPTION	BY	CHKD
6		ADDED 1/2\"/>		

NO.	DATE	DESCRIPTION	BY	CHKD
7		ADDED 1/2\"/>		

NO.	DATE	DESCRIPTION	BY	CHKD
8		ADDED 1/2\"/>		

NO.	DATE	DESCRIPTION	BY	CHKD
9		ADDED 1/2\"/>		

NO.	DATE	DESCRIPTION	BY	CHKD
10		ADDED 1/2\"/>		

NO.	DATE	DESCRIPTION	BY	CHKD
11		ADDED 1/2\"/>		

U.S. NAVAL SHIP SYSTEMS COMMAND  
WASHINGTON, D.C. 20376  
OCEANOGRAPHIC RESEARCH SHIP  
AGOR (UTILITY) CLASS  
NAUTIC MARINE SERVICES, INC.  
P.O. BOX 8888 NEW ORLEANS, LA 70118

CONSTRUCTION PROFILE	FRAME
FRAMES 10 THRU 17	S/1
FRAMES 18 THRU 23	S/2
FRAMES 24 THRU 33	S/3
FRAMES 34 THRU 43	S/4
FRAMES 44 THRU 53	S/5
FRAMES 54 THRU 63	S/6
FRAMES 64 THRU 73	S/7
FRAMES 74 THRU 83	S/8
FRAMES 84 THRU 93	S/9
FRAMES 94 THRU 103	S/10

CONSTRUCTION PROFILE	FRAME
FRAMES 10 THRU 17	S/1
FRAMES 18 THRU 23	S/2
FRAMES 24 THRU 33	S/3
FRAMES 34 THRU 43	S/4
FRAMES 44 THRU 53	S/5
FRAMES 54 THRU 63	S/6
FRAMES 64 THRU 73	S/7
FRAMES 74 THRU 83	S/8
FRAMES 84 THRU 93	S/9
FRAMES 94 THRU 103	S/10

CONSTRUCTION PROFILE	FRAME
FRAMES 10 THRU 17	S/1
FRAMES 18 THRU 23	S/2
FRAMES 24 THRU 33	S/3
FRAMES 34 THRU 43	S/4
FRAMES 44 THRU 53	S/5
FRAMES 54 THRU 63	S/6
FRAMES 64 THRU 73	S/7
FRAMES 74 THRU 83	S/8
FRAMES 84 THRU 93	S/9
FRAMES 94 THRU 103	S/10

CONSTRUCTION PROFILE	FRAME
FRAMES 10 THRU 17	S/1
FRAMES 18 THRU 23	S/2
FRAMES 24 THRU 33	S/3
FRAMES 34 THRU 43	S/4
FRAMES 44 THRU 53	S/5
FRAMES 54 THRU 63	S/6
FRAMES 64 THRU 73	S/7
FRAMES 74 THRU 83	S/8
FRAMES 84 THRU 93	S/9
FRAMES 94 THRU 103	S/10

CONSTRUCTION PROFILE	FRAME
FRAMES 10 THRU 17	S/1
FRAMES 18 THRU 23	S/2
FRAMES 24 THRU 33	S/3
FRAMES 34 THRU 43	S/4
FRAMES 44 THRU 53	S/5
FRAMES 54 THRU 63	S/6
FRAMES 64 THRU 73	S/7
FRAMES 74 THRU 83	S/8
FRAMES 84 THRU 93	S/9
FRAMES 94 THRU 103	S/10

CONSTRUCTION PROFILE	FRAME
FRAMES 10 THRU 17	S/1
FRAMES 18 THRU 23	S/2
FRAMES 24 THRU 33	S/3
FRAMES 34 THRU 43	S/4
FRAMES 44 THRU 53	S/5
FRAMES 54 THRU 63	S/6
FRAMES 64 THRU 73	S/7
FRAMES 74 THRU 83	S/8
FRAMES 84 THRU 93	S/9
FRAMES 94 THRU 103	S/10

CONSTRUCTION PROFILE	FRAME
FRAMES 10 THRU 17	S/1
FRAMES 18 THRU 23	S/2
FRAMES 24 THRU 33	S/3
FRAMES 34 THRU 43	S/4
FRAMES 44 THRU 53	S/5
FRAMES 54 THRU 63	S/6
FRAMES 64 THRU 73	S/7
FRAMES 74 THRU 83	S/8
FRAMES 84 THRU 93	S/9
FRAMES 94 THRU 103	S/10

CONSTRUCTION PROFILE	FRAME
FRAMES 10 THRU 17	S/1
FRAMES 18 THRU 23	S/2
FRAMES 24 THRU 33	S/3
FRAMES 34 THRU 43	S/4
FRAMES 44 THRU 53	S/5
FRAMES 54 THRU 63	S/6
FRAMES 64 THRU 73	S/7
FRAMES 74 THRU 83	S/8
FRAMES 84 THRU 93	S/9
FRAMES 94 THRU 103	S/10

CONSTRUCTION PROFILE	FRAME
FRAMES 10 THRU 17	S/1
FRAMES 18 THRU 23	S/2
FRAMES 24 THRU 33	S/3
FRAMES 34 THRU 43	S/4
FRAMES 44 THRU 53	S/5
FRAMES 54 THRU 63	S/6
FRAMES 64 THRU 73	S/7
FRAMES 74 THRU 83	S/8
FRAMES 84 THRU 93	S/9
FRAMES 94 THRU 103	S/10